

A TOPCON GTS-28 TOTAL STATION was used to obtain the linear and angular measurements used in the preparation of this plan. The field data upon which this plan is based has a closure precision of one foot in 2,500 feet and an angular error of ± 1.5 seconds per angle point and was adjusted using the CRANDALL method. The survey was then calculated for closure and is found to be accurate within one foot in 2,100,000 feet.

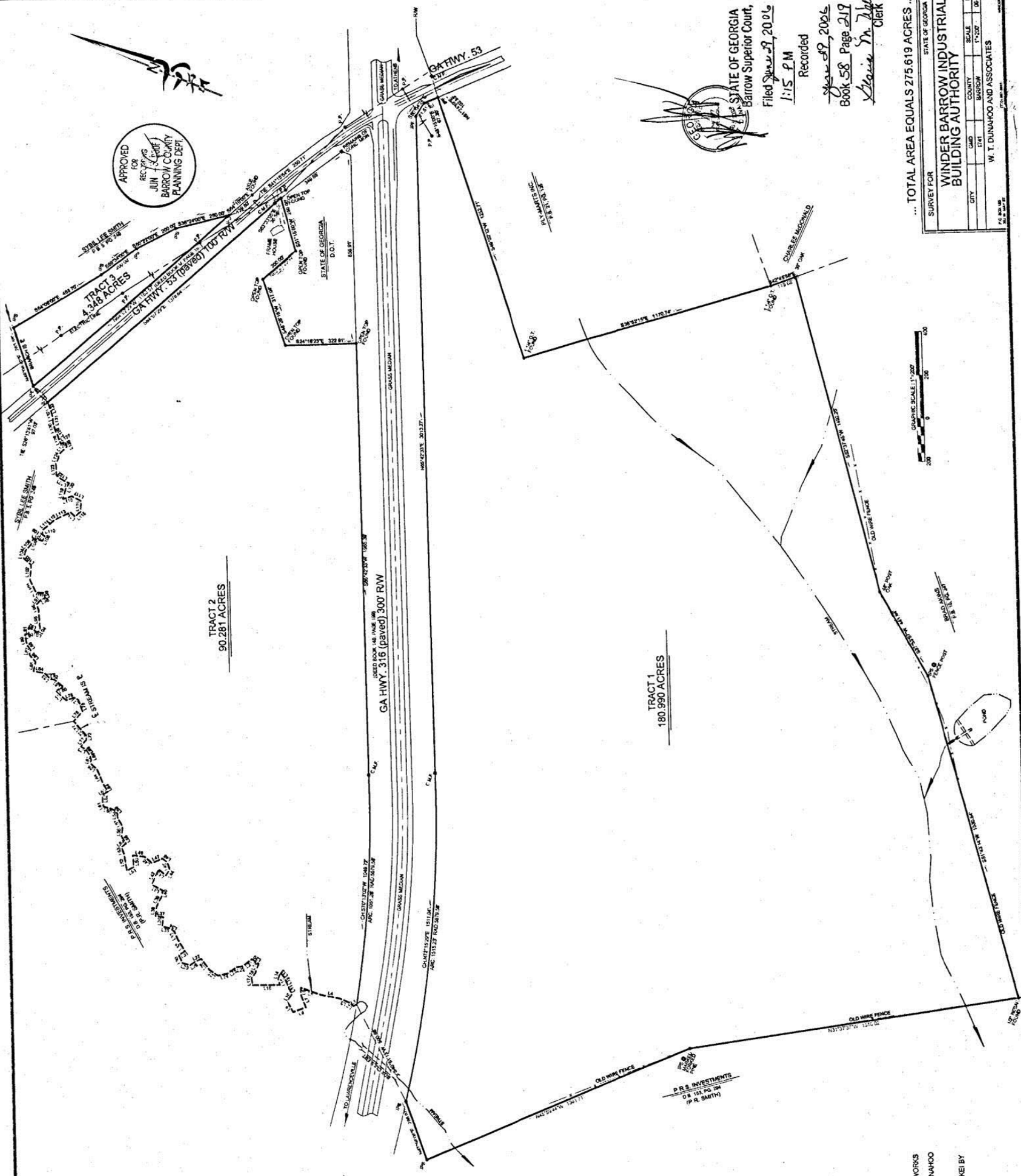
APPROVED FOR RECORDING JUN 20 2006 BARROW COUNTY PLANNING DEPT.

CALLS ALONG BRANCH FROM 316 RW TO HWY 53 RW - TRACT 2

LINE	LENGTH	BEARING
L1	18.80	N52°59'52"W
L2	23.71	N48°35'32"E
L3	25.96	N18°03'32"E
L4	45.65	N00°46'50"E
L5	90.02	N17°52'17"W
L6	93.43	N02°48'37"W
L7	28.75	S70°32'10"W
L8	64.52	S42°27'37"W
L9	61.17	N43°39'17"W
L10	34.64	N30°54'24"E
L11	46.97	S01°53'24"E
L12	38.31	N49°28'59"E
L13	29.55	N27°13'29"E
L14	36.69	S08°16'54"W
L15	26.08	S49°05'52"W
L16	127.84	N23°12'14"W
L17	33.97	N02°48'52"E
L18	22.32	S73°31'37"E
L19	51.04	N07°25'30"E
L20	36.48	N09°32'04"E
L21	52.35	N01°01'50"W
L22	28.27	N30°10'19"W
L23	50.32	N56°30'08"W
L24	45.02	N35°12'15"W
L25	47.93	N12°35'22"E
L26	80.54	N49°00'13"W
L27	34.59	N37°02'02"W
L28	24.79	N05°16'54"W
L29	35.68	N05°16'54"W
L30	38.12	N47°50'24"E
L31	32.73	S58°38'42"E
L32	63.24	N55°52'41"E
L33	39.03	N44°05'12"E
L34	29.21	N09°28'30"E
L35	30.40	N12°33'45"W
L36	44.64	N72°33'05"E
L37	35.77	N17°33'49"W
L38	47.22	N72°32'12"E
L39	52.21	S08°23'17"E
L40	24.31	N72°02'52"E
L41	55.32	N08°00'37"E
L42	76.51	S09°01'58"E
L43	44.54	S17°27'44"W
L44	33.48	S04°32'00"E
L45	32.68	N49°07'52"E
L46	28.20	N19°23'38"E
L47	51.19	N49°31'14"W
L48	43.72	N18°26'28"E
L49	53.07	N19°54'41"W
L50	53.71	S01°36'43"W
L51	35.57	N51°12'21"W
L52	80.97	N56°56'12"E
L53	30.60	N49°24'07"E
L54	25.68	S62°27'28"E
L55	38.04	N38°31'42"E
L56	45.97	N73°05'13"E
L57	45.97	N38°12'45"E
L58	18.34	N07°54'13"E
L59	21.31	N25°20'11"E
L60	49.68	N05°24'50"W
L61	16.00	N47°10'00"E
L62	38.45	N68°02'00"E
L63	28.70	S58°13'27"E
L64	41.27	N36°46'41"E
L65	72.74	N44°43'41"E
L66	42.56	N21°00'07"E
L67	16.18	N85°01'24"E

TRACT 2
90.281 ACRES

TRACT 1
180.990 ACRES



- REFERENCES:
1. SURVEY FOR MRS. CHARLENE REDDING BY W.T. DUNAHOO DATED 10-15-2000
 2. SURVEY FOR WINDING BARROW INDUSTRIAL BUILDING AUTHORITY BY W.T. DUNAHOO DATED 2-28-02
 3. SURVEY FOR AMERICAN LAND WORKS BY W.T. DUNAHOO & ASSOCIATES DATED 7-27-2000
 4. SURVEY FOR DANIEL CHILDERS BY HARWELL & ASSOCIATES DATED 12-23-83
 5. SURVEY FOR JOSEPH VERECZEKI & LUYA VERECZEKI BY GLENN DOWNS DATED 3-15-1981

LEGEND:
P.P. - POWER POLE
C.M.F. - CONCRETE MONUMENT FOUND
I.P.F. - IRON PIN FOUND - 1/2" HEIGHT
I.P.S. - IRON PIN SET - 1/2" OPEN TOP

STATE OF GEORGIA
Barrow Superior Court,
Filed June 21, 2006
1:15 P.M.
Recorded
Book 58, Page 219
Klaus M. Hill
Clerk

... TOTAL AREA EQUALS 275.619 ACRES ...

SURVEY FOR			
WINDING BARROW INDUSTRIAL BUILDING AUTHORITY			
CITY	COUNTY	SCALE	DATE
BARROW	BARROW	1"=200'	06-22-2006

W. T. DUNAHOO AND ASSOCIATES

