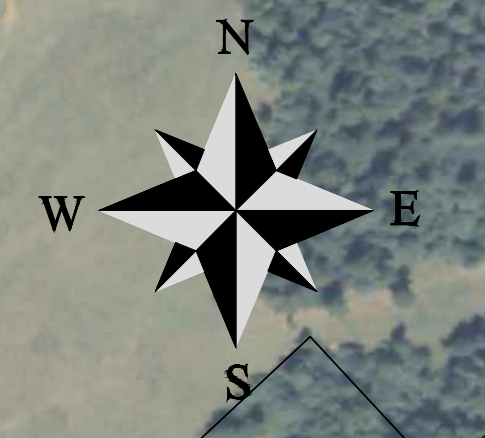
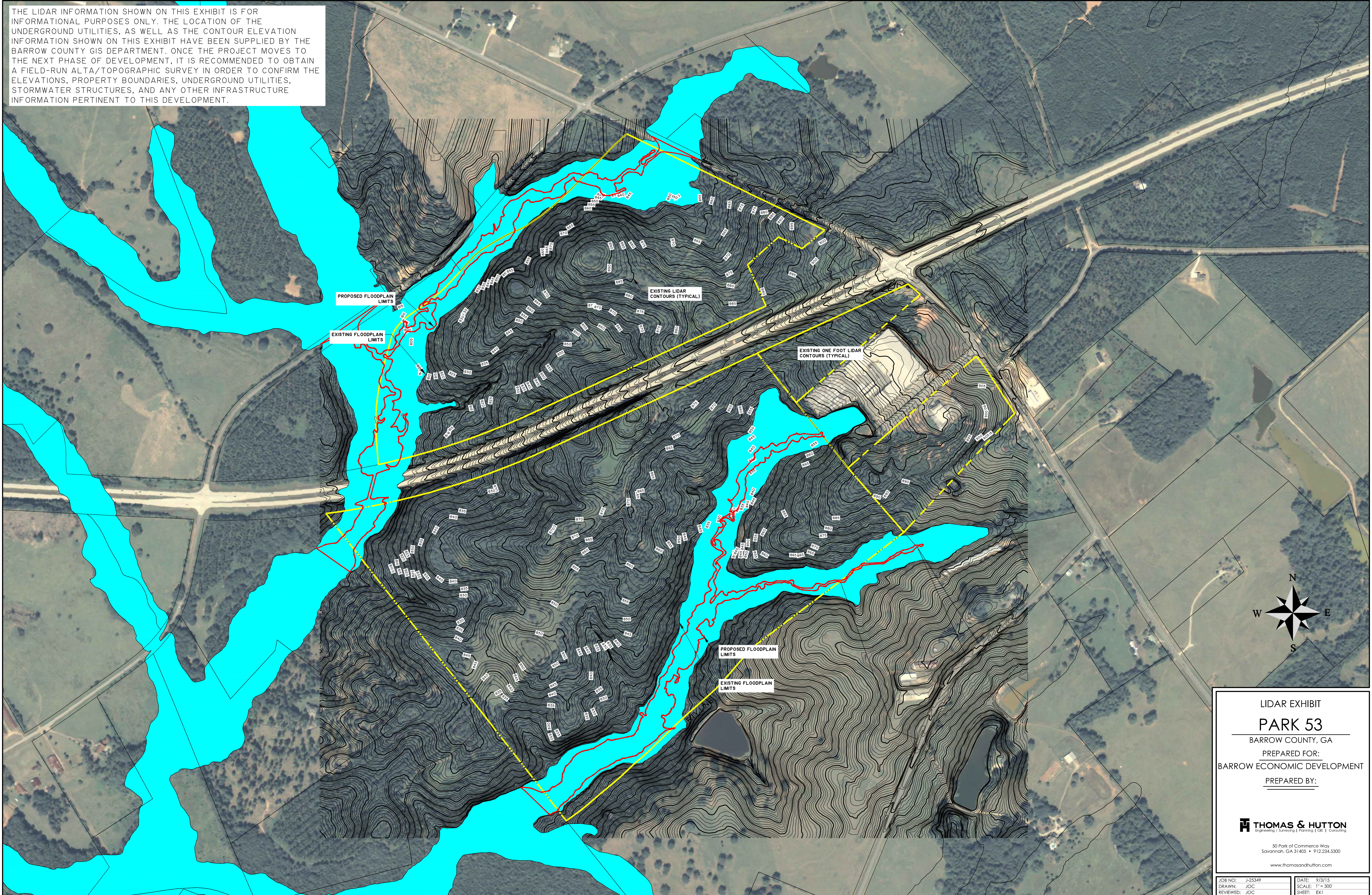


2:15:24 PM 2/15/2016 10:00:00 AM Thomas & Hutton, Inc. Savannah, GA 31405 • 912.234.5300

THE LIDAR INFORMATION SHOWN ON THIS EXHIBIT IS FOR INFORMATIONAL PURPOSES ONLY. THE LOCATION OF THE UNDERGROUND UTILITIES, AS WELL AS THE CONTOUR ELEVATION INFORMATION SHOWN ON THIS EXHIBIT HAVE BEEN SUPPLIED BY THE BARROW COUNTY GIS DEPARTMENT. ONCE THE PROJECT MOVES TO THE NEXT PHASE OF DEVELOPMENT, IT IS RECOMMENDED TO OBTAIN A FIELD-RUN ALTA/TOPOGRAPHIC SURVEY IN ORDER TO CONFIRM THE ELEVATIONS, PROPERTY BOUNDARIES, UNDERGROUND UTILITIES, STORMWATER STRUCTURES, AND ANY OTHER INFRASTRUCTURE INFORMATION PERTINENT TO THIS DEVELOPMENT.



LIDAR EXHIBIT
PARK 53
 BARROW COUNTY, GA
 PREPARED FOR:
 BARROW ECONOMIC DEVELOPMENT
 PREPARED BY:

THOMAS & HUTTON
Engineering | Surveying | Planning | GIS | Consulting

50 Park of Commerce Way
 Savannah, GA 31405 • 912.234.5300
 www.thomasandhutton.com

JOB NO: J-25349	DATE: 9/3/15
DRAWN: JOC	SCALE: 1" = 300'
REVIEWED: JOC	SHEET: EX1