



# WINDER

## INDUSTRIAL PARK

589 Loganville Highway | Winder, GA, 30680

### CLASS A SHALLOW-BAY FACILITY

**SPACE AVAILABLE:** 163,800 SF (Building A)

**UPCOMING PHASES:** 318,060 SF (Building B)

106,920 SF (Building C)

MIKE MARTIN  
770.913.3929 | [mmartin@ackermanco.net](mailto:mmartin@ackermanco.net) | [ackermanco.com](http://ackermanco.com)

### HIGHLIGHTS

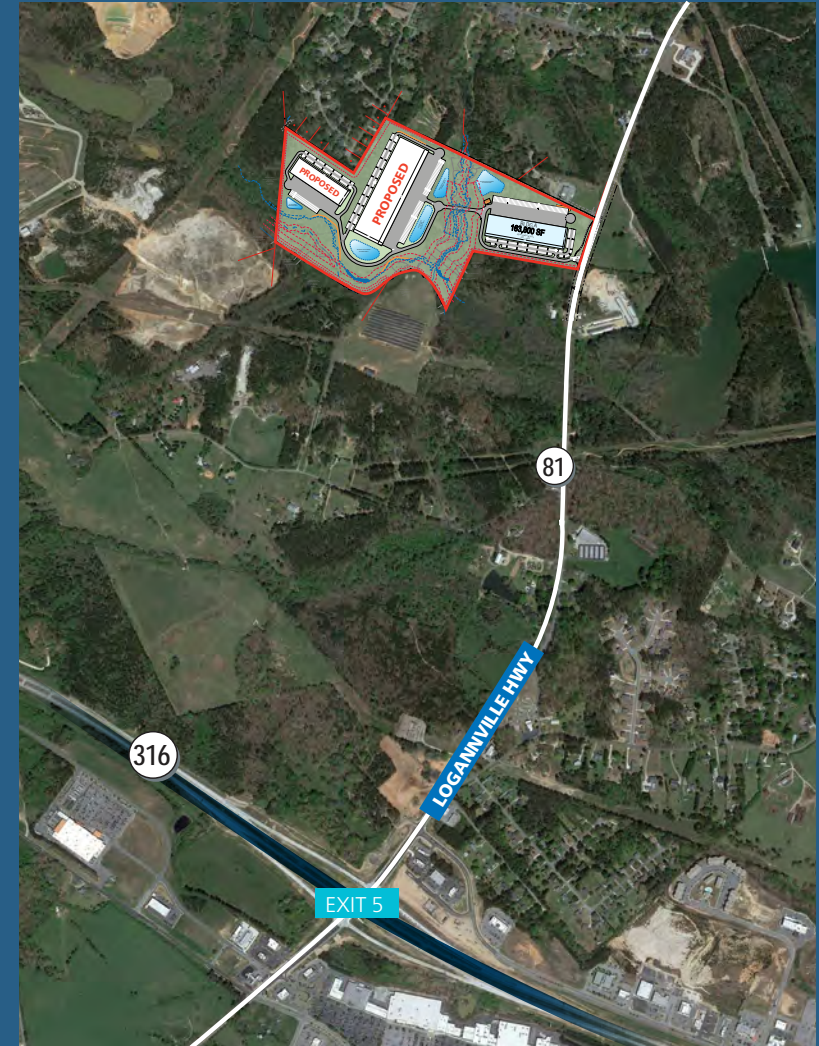
- 163,800 SF available
- 32' ceiling height
- 45 dock-high doors | 2 drive-in door
- 2,000 amp. 277/480 volt
- Ample parking - 183 auto spaces | 60 trailer spaces
- Option to subdivide
- Strategically positioned for regional distribution
- Conveniently located between U.S. Route 29 and I-85

# Winder Industrial Park

Industrial Warehouse for Lease – 163,800 SF

589 Loganville Highway  
Winder, GA 30680  
South Barrow County

Building Type:	Shallow-bay warehouse   rear load
Building Size:	163,800 SF
Available Space:	163,800 SF
Office:	Build-to-suit
Clear Height:	32'
Column Spacing:	52' x 50' bays
Dock(s):	45 dock-high doors   2 drive-in doors
Building Depth:	210
Building Length:	780'
Floor Slab:	6" Ductilcrete
Fire Sprinkler:	ESFR
Auto Parking:	183 spaces
Truck Court(s):	Shared 185' deep; 60' concrete apron
Roof:	R20; 45 mil white TPO, 15-year warranty
Exterior Construction:	Tilt-up exterior concrete wall construction



MIKE MARTIN  
770.913.3929 | mmartin@ackermanco.net

## Ackerman & Co.

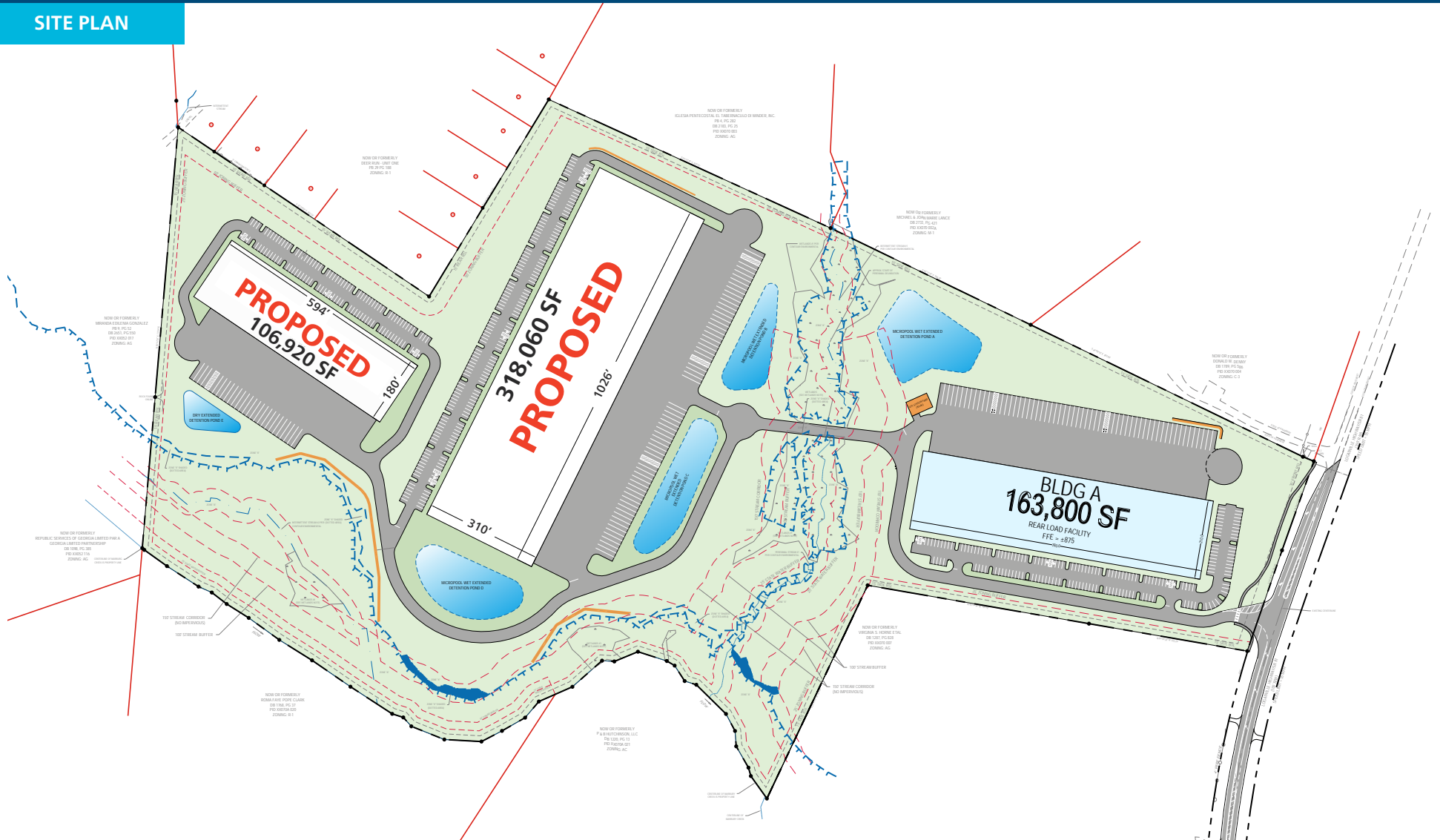
©2025 Ackerman & Co. All rights reserved. While we have no reason to doubt the accuracy of the information provided from sources we deem reliable, we cannot guarantee it and therefore assume no liability for errors, omissions or changes to this content.

# Winder Industrial Park

Industrial Warehouse for Lease – 163,800 SF

589 Loganville Highway  
Winder, GA 30680  
South Barrow County

## SITE PLAN



## Ackerman & Co.

MIKE MARTIN  
770.913.3929 | [mmartin@ackermanco.net](mailto:mmartin@ackermanco.net)

©2025 Ackerman & Co. All rights reserved. While we have no reason to doubt the accuracy of the information provided from sources we deem reliable, we cannot guarantee it and therefore assume no liability for errors, omissions or changes to this content.

# Winder Industrial Park

Industrial Warehouse for Lease – 163,800 SF

589 Loganville Highway  
Winder, GA 30680  
South Barrow County



MIKE MARTIN  
770.913.3929 | [mmartin@ackermanco.net](mailto:mmartin@ackermanco.net)

## Ackerman & Co.

©2025 Ackerman & Co. All rights reserved. While we have no reason to doubt the accuracy of the information provided from sources we deem reliable, we cannot guarantee it and therefore assume no liability for errors, omissions or changes to this content.

# Winder Industrial Park

Industrial Warehouse for Lease – 163,800 SF

589 Loganville Highway  
Winder, GA 30680  
South Barrow County

## NOTABLE DISTANCES

### MAJOR ARTERIES / INTERSTATES

I-85	11 miles
I-85 / I-985 Split	20 miles
I-20	28 miles
I-85 / I-75 Split	43 miles

### AIR

ATLANTA INTERNATIONAL AIRPORT	57 miles
-------------------------------	----------

### HARBOR

Port of Savannah	226 miles
Port of Charleston	279 miles



## Ackerman & Co.

MIKE MARTIN  
770.913.3929 | [mmartin@ackermanco.net](mailto:mmartin@ackermanco.net)

©2025 Ackerman & Co. All rights reserved. While we have no reason to doubt the accuracy of the information provided from sources we deem reliable, we cannot guarantee it and therefore assume no liability for errors, omissions or changes to this content.